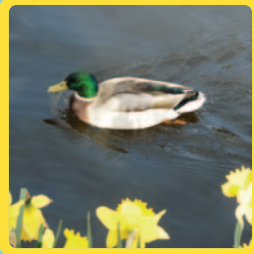




For family friendly places to explore in Lichfield District and surrounding areas visit our website www.visitlichfield.co.uk/greatforkids



VISITLICHFIELD.CO.UK



Lichfield district council



Please be careful on this trail, some streets are cobbled and uneven. Make sure you have a responsible adult with you too!

Minster's Trail

Lichfield's Heritage Trail for Children



VISITLICHFIELD.CO.UK



Hi I'm Minster the Duck and I'm your guide for the Lichfield Trail.

I've made up some tricky questions for you to follow round the historic city of Lichfield, so get thinking!

If you're not sure on some questions just give it a go, you never know you could be right! If you answer the questions correctly then you can collect your reward sticker.

You start your adventure outside St Mary's in the Market Square.



1 Hundreds of years ago, the market place used to hold scary events! People that were in trouble with the law were punished by being burned at the stake! The church on the market square is called St Mary's and on the wall is a plaque. Can you see it? There are a few so you have to find the right one. It has the name EDWARD WIGHTMAN on, he was the last person in the whole of England to die in such a horrid way, but can you spot the year?

Direction - facing St Mary's, look to your right and you will see the Samuel Johnson Birthplace Museum.

2 Samuel Johnson wrote the first proper English dictionary, what a lot of words! This building is his birthplace, write down the date he was born.

Direction - turn so St Mary's Church is on your right. Walk across the Market Square over to the shops in front of you on the other side of the road.

1 Take a look at the handy map over the page and follow my footprints round the trail.

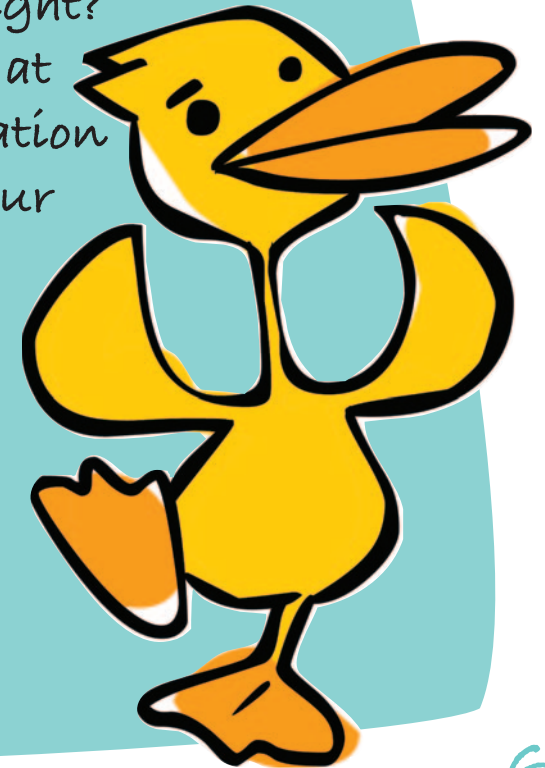
10 This building was used as a prison in the Civil War. Both Royalists and Roundheads were chained to the walls inside the house. Can you spot the year the building was built?

Direction - head back to the Tourist Information at Lichfield Library.



How did you do? Did you get the questions right? Have them checked at the Tourist Information desk and collect your reward sticker.

I hope you had a quacking time!



Follow my feet to help you on the trail



Start here





How are you doing?

6 What type of animal sits proudly at the gates?

What do they have protecting them?

Direction - careful as you cross over the road to the entrance to Beacon Park. Entering the park, can you see a statue standing proud? He is wearing an outfit fit for a Captain. Can you see him? Go and have a closer look. His name is Commander Edward John Smith.

7 Commander Smith was the captain of a famous sinking ship. What was the name of it?

Read the quote in the stone below, what does he say to be 'above all?'

Direction - continuing the trail, you come out of the gates you entered and turn right. Cross carefully over the road and go straight ahead towards Bird Street. On the corner of Bird Street to the right is a very graceful bird.

8 What type of bird is it?

Direction - look to your left on the wall facing the new building. Can you see the mosaic?

9 Who is the famous person in the mosaic?

Direction - continue to walk along Bird Street. In the olden days the horses and carriages used to stop at the old pubs down this road such as the Kings Head and the George Hotel. When you get to the end of Bird Street turn left. Walk along Bore Street until you get to a Tudor building on your right. It's called The Tudor of Lichfield. It's a café and sells chocolates too!



3 There is the head of an animal on one of the shop fronts. What animal is it?

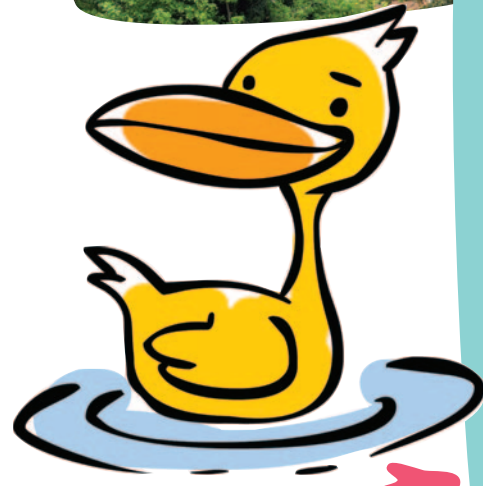
Direction - turn left and walk into Dam Street. Keep an eye out for Brooke House on your right.

4 Stand outside this house and look left. You will see Lichfield Cathedral. It is the only Medieval Cathedral in the country that has three spires. In the civil war in the 17th Century the middle spire was destroyed in the fighting. It had to be rebuilt - what a huge task!

Look back at Brooke House there is a plaque above the door. It was here that in the Civil War, Lord Brooke, Commander of the Roundheads was shot.

Can you see on the plaque the year that this happened?

Direction - look to your left, can you see the pool? It is called Minster Pool and this is where I live - can you spot my friends? Continue straight on towards Lichfield Cathedral. Turn left into The Close and walk along the path. Look to the right and walk to the main entrance of the Cathedral.



5 There are Kings carved into the stone above the entrance to the Cathedral. How many can you count?

Direction - walk along the path out of The Close and towards Beacon Street. Turn left and walk straight on the path and look to the left. Stop outside the Remembrance Garden.