



HERITAGE



SHOPPING



THRILLS



getaway



LEISURE



CULTURE



HOSPITALITY

Take a Short Break to Lichfield

Escape the everyday and enjoy the perfect weekend getaway.



VISITLICHFIELD.CO.UK



Lichfield is the perfect getaway.

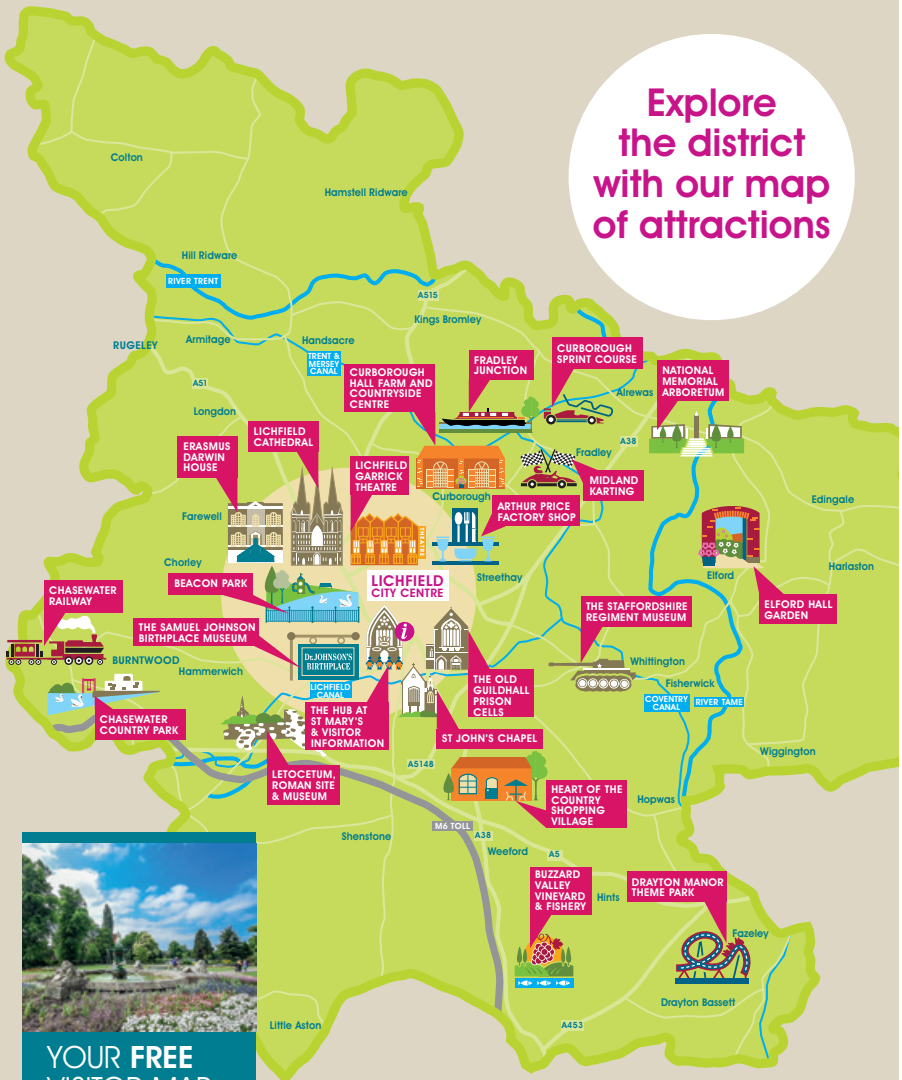
There's nothing better than finding the perfect getaway for the weekend to blow the cobwebs away, and you're guaranteed to discover your ideal **short break** in Lichfield District, located in southern Staffordshire, a short drive from Birmingham.

Treat yourself, your partner, the whole family or a group of friends to a long weekend of fun. Discover some of the area's rich heritage and its niche shopping offer. Whatever you're in the mood for, you'll find it in Lichfield.

You can choose from a wide variety of accommodation for your stay, from city centre hotels and boutique inns, to self-catering and caravanning. Discover your perfect place to stay at:

[visitlichfield.co.uk/accommodation](https://www.visitlichfield.co.uk/accommodation)

Explore
the district
with our map
of attractions



**YOUR FREE
VISITOR MAP**

Discover the district of Lichfield, home of many of Staffordshire's best attractions. Whatever you're looking for, you'll find it here!

Download or order your copy
at visitlichfield.co.uk/brochurerequests

DISCOVER FASCINATING

history

don't miss...



Chasewater Railway, where you can book a trip on a vintage train along an historic route.



The Samuel Johnson Birthplace Museum

Lichfield District is rich in history, with its Roman settlement, medieval architecture, Georgian museums, Civil War battles and much more. Whether you want to dive into a particular period or explore the scope of Lichfield's heritage, there are some fascinating stories to discover.

Learn about St Chad and so much more when visiting the stunning **Lichfield Cathedral**, the only medieval English cathedral with three spires. Then, call into **Erasmus Darwin House**, where you can learn about Charles Darwin's grandfather, who was himself a scientist, philosopher, poet and physician.



Erasmus Darwin House



Letocetum Roman Site



Staffordshire Regiment Museum

Stop off at **The Samuel Johnson Birthplace Museum** and uncover the life and times of Dr Johnson, renowned author of *A Dictionary of the English Language*, first published in 1755.

Explore just outside the city and visit **Letocetum Roman Site** at Wall, which is both a National Trust and English Heritage site. Discover what Roman Britain was like at the remains of this important Roman staging post and settlement.

For a look back at the area's military history visit **Staffordshire Regiment Museum** in Whittington. The museum tells the story of the local regiment, and features a World War I replica trench, the Coltman Trench.

ESCAPE FOR SOME

fresh air

don't miss...



All the green space right in Lichfield city centre in Beacon Park, Stowe Pool and Minster Pool.



National Memorial Arboretum

If exploring the great outdoors and getting closer to nature is your idea of the perfect getaway, there is no shortage of green space in Lichfield District.

Chasewater Country Park is a short drive from Lichfield city centre. The 90 hectare reservoir and surrounding nature reserve, which is all a protected Site of Special Scientific Interest (SSSI), is a wonderful place to explore or enjoy water sports.



Chasewater Country Park



Fradley Nature Reserve



Beacon Park

Head on over to Alrewas and visit the **National Memorial Arboretum**. There are nearly 400 memorials in the woodland, walks to discover and plenty more to see along the way.

Round off an enjoyable break by spending a morning at **Fradley Nature Reserve**. Alongside **Fradley Junction**, the meeting point of the Trent and Mersey and Coventry canals, you can explore the award-winning nature reserve and try one of the circular walks.

UNWIND ON A WEEKEND

getaway

don't miss...



The tranquil spaces you can find right in the city centre, like Minster Pool, the Garden of Remembrance or the Museum Gardens in Beacon Park.



The Hub at St Mary's

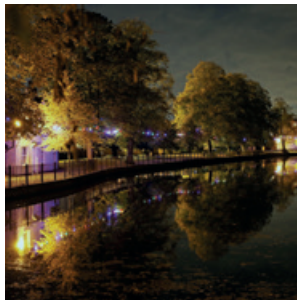
We all deserve a treat, so book yourself a short break and spoil yourself rotten! We've got everything you'll need, including some wonderful hotels for a luxury break.

What better way to treat yourself than to shop till you drop? Lichfield District is packed full of **independent shops** you won't find anywhere else, so you're guaranteed to go home with plenty of unique finds.

In the city centre, there's a wide range of shops along our historic streets like **Dam Street** and in our open air **Three Spires Shopping Centre** and **Tudor Row**. You can also take a short drive to one of our shopping villages: **Heart of the Country** or **Curborough Hall Farm Countryside Centre**.



Lichfield Garrick



Minster Pool



Independent Shopping

Don't forget to book in some culture with an evening at the theatre. The award-winning **Lichfield Garrick** has a great programme of live performances as well as recorded shows and movies in its cinema, so you're bound to find something to entertain you.

Enjoy the historic atmosphere of **The Hub at St Mary's**, which offers seasonal exhibitions and performances for everyone.

Finally, treat yourself to amazing food, sweet treats, cocktails or a relaxed afternoon in one of our historic inns.

ENJOY SOME FAMILY

fun time



There is never a dull moment in Lichfield District, everyone will love a family getaway full of adrenaline and adventure.

Kick off your break by getting the blood pumping by spending a day at **Drayton Manor Theme Park**. Your little ones will love **Thomas Land™** and your bigger little one can get their thrills on the rollercoasters in the main theme park. For animal lovers there's a zoo with big cats, monkeys, reptiles and more.



Midland Karting



Beacon Park



Drayton Manor Theme Park

Still got energy to burn? Book a few laps of the track at **Midland Karting**. A morning whizzing around in a go kart will definitely wake everyone up! After a spot of lunch, explore the parks and playgrounds in Lichfield city centre, including **Beacon Park** and **Stowe Pool**, and enjoy our family friendly attractions.

fun activities for kids...

Many local attractions have tailored activities for children, including:

- Play in a tank and the trenches at the Staffordshire Regiment Museum
- Pretend to be a Roman at the Letocetum Roman Site at Wall
- Follow the Stickman Trail at the National Memorial Arboretum
- Dress up as a Georgian at Erasmus Darwin House
- Discover the Green Fairy Woods at Heart of the Country Shopping Village, with lots of fairy doors to find and two friendly pigs sharing the woodland.

Tours and Trails



explore

We offer a range of trails and guided walks around Lichfield city for all ages and types of groups. Enquire about availability for your stay by popping into our Visitor Information Centre in St Mary's in the Market Square or online at visitlichfield.co.uk

Stay and Tour

If you are booking a stay in the district don't forget to ask your hotel about the Stay and Tour package. This includes an overnight stay in the hotel and a guided tour of Lichfield city with one of Visit Lichfield's top guides.

For more information about anything in this brochure, or for other tips or help during your visit, get in touch with the team at our

Visitor Information Centre.

Email: info@visitlichfield.com **Phone:** 01543 308924

St Mary's, Market Street, Lichfield WS13 6LG

 [VisitLichfield](https://twitter.com/VisitLichfield)  [visitlichfield](https://www.facebook.com/visitlichfield)  [visitlichfield](https://www.instagram.com/visitlichfield)

Photo Credits:

Chris Day, Drayton Manor Theme Park, Erasmus Darwin House, Terry Fidgeon (Courtesy of The Staffordshire Regiment Museum), Thomas Hughes, Lichfield Garrick, Lichfield Cathedral Photographers, Midland Karting, National Memorial Arboretum, Pamela Raith.

Copyright Lichfield District Council. Coronavirus (Covid-19) – This guide is correct at the time of publishing (March 2021). However, due to changing national restrictions, we recommend contacting all venues directly before your visit for up to date information.